

## CS-TSB-14

### NOTE:

---

**Please review the product instructions prior to attempting installation to ensure installer is equipped with all tools and capabilities necessary to complete the product installation. We recommend thoroughly reading the instructions at least twice prior to attempting Installation.**

**Before beginning disassembly of the vehicle, check the “What’s Included” section of the instructions to ensure you’ve received all parts necessary to complete installation. Further, verify that the parts received are PROPER TO YOUR application (year range, motor, etc.) to avoid potential down-time in correcting potential discrepancies. Any discrepancies will be handled by Carli Suspension and the correcting products will be shipped UPS Ground.**

### LIFETIME PRODUCT WARRANTY

---

Carli Suspension provides a limited lifetime product warranty against defects in workmanship and materials from date of purchase to the original purchaser for all products produced by Carli Suspension. Parts not manufactured by, but made to Carli Suspension’s specifications by third party manufacturers will carry a warranty through their respective manufacturer. (i.e. King Shocks, Bilstein Shocks, Fox Shocks). Deaver Leaf Spring’s warranty will be processed by Carli Suspension.

Proof of purchase (from the original purchaser only) will be required to process any warranty claims. Carli Suspension products must be purchased for the listed Retail Price reflected by the price listed on the Carli Suspension Website at the time of purchase. Carli Suspension reserves the right to refuse warranty claims made by any customer refusing or unable to present proof of purchase, or presenting proof of purchase reflecting a price lower than Carli Suspension’s Retail Price at the time the item was purchased.

Carli Suspension’s Limited Lifetime Warranty excludes the following parts which are subject to wear: Track Bar Bushings, Track Bar Heim Joints, Limit Straps, Control Arm Bushings, Radius Arm Bushings, Shock Bushings, Sway Bar End Link Heim Joints, Shock Seals, Shock Bearings, and Corrosion on Shock Shafts or Bodies. These items will be warranted for a period of 60 days from the date of purchase only if determined to be installed properly signifying manufacturing defect. Carli Suspension cannot warrant a product’s cosmetic finish due to the varying extreme elements that may be encountered.

Any alterations, modifications, or improper installation, of the product will void this warranty. Products should be inspected for defect upon receipt and approved before installation. Any defect in NEW product will be warranted if returned before installation in its original packaging. Carli Suspension’s obligation under this warranty is limited to the repair or replacement of the defective product only. All costs of removal, installation or reinstallation, freight charges, incidental or consequential damage are expressly excluded from this warranty.

Carli Suspension is not responsible for damages and/or warranty of other vehicle parts related or non-related to the installed Carli Suspension product. This warranty shall not apply to any product that has been subjected to accident, negligence, alteration, abuse or misuse as determined by Carli Suspension. Carli Suspension reserves the right to refuse warranty claims if produced parts are combined and/or substituted with other aftermarket suspension products. Combination and/or substitution of other aftermarket suspension components may cause premature wear and/or product failure. Carli Suspension reserves the right to change/alter product without obligation to update any previously purchased products.



**Please Visit:** [Forums.CarliSuspension.com](http://Forums.CarliSuspension.com)  
*Troubleshooting advice or to download an electronic copy of this document.*

### What's Included in the Kit

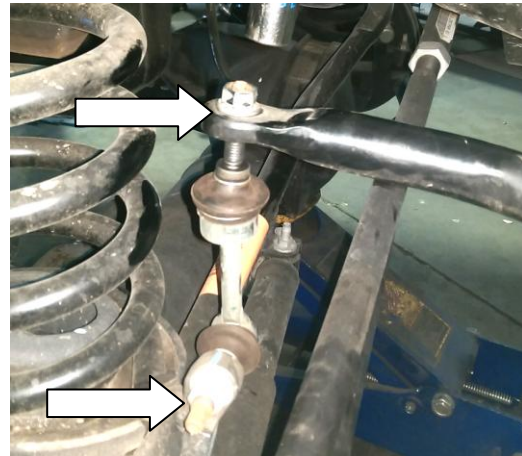
- Hardware Kit:
  - (2) 3/8" – 24 x 2.5" Bolt
  - (2) 3/8"- 24 C Lock Nut
  - (4) M10 x 40 ST100 Bolt
  - (2) 5/16" – 24 x 1" Bolt
  - (2) 5/16" Locking Washer
  - (2) 5/16" Fender Washer
- (2) Torsion Sway Bar Arms w/ Carli Decals
- Torsion Sway Bar
- Torsion Sway Bar Instructions
- (2) Heavy Duty End Links:
  - (2) 5/8" x 18 x 3" All Thread Stud
  - (4) 5/8" x 5/8" Heim Rod End
  - (8) 1/2 x 1.5 Misalignment Spacer
  - (4) 5/8" x 18 Jam Nut
  - (10) 1/2" Flat Washer
  - (2) 1/2" Reducer Sleeve
  - (4) 1/2 C Lock Nut
- (2) Carli Torsion Sway Bar Frame Bracket
- (2) Torsion Sway Bar Bushings Pressed into Bracket

### Installation Instructions

**Note:** Truck needs to be sitting at ride height for installation.

**Note:** If you DO NOT have a Steering Box Stabilizer/Brace (support bearing) installed, you will RE-USE your 4 factory Sway Bar Bolts! If you DO have a steering box support brace, use the included Flange Head cap screws.

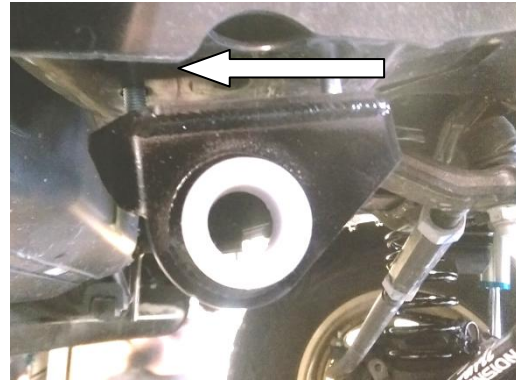
1. Remove upper retaining nut on the stock sway bar end link.
2. Loosen lower retaining nut attaching sway bar to the axle and remove sway bar end link from the truck.



3. Remove the four bolts (2 per side) holding the O.E.M sway bar to the frame and remove O.E.M sway bar. Set bolts aside.



4. Snug torsion sway bar brackets to the frame with factory or supplied hardware. The Bushing lip will be on the outside of the bracket (facing the tire) and the bushing should be offset forward (The passenger side is pictured). Apply a small amount of grease inside the bushing for easier install of the torsion bar.



5. Align torsion bar with driver side bushing and tap it through to the passenger side using a rubber mallet.



6. Tap torsion bar through until it is centered. There should be  $\frac{3}{4}$ " of the bar sticking out from the end of each bushing. Once aligned, Torque Sway bar drop bracket hardware to 35ft. lbs.



7. Insert supplied pinch bolt into the end of one of the arms with the nut side down, do not tighten. Push the arm onto the splines of the torsion bar and secure using supplied  $5/16$ -24 X 1" bolt, lock washer, fender washer. Install Arm on other side and insert  $5/16$ "x1" on the bar. Snug by hand to ensure even spline engagement. Once even, torque both  $5/16$ " bolts to 33 ft. lbs.

8. Tighten pinch bolts to 33 ft/lbs.



9. Thread the heim joints away from the jam nuts and apply loctite to the threads where the jam nuts will be torqued.
10. Adjust supplied end link to 5.75" center eye to center eye (Bottomed out) for stock to 3" Lift applications and tighten jam nuts to 40 ft. lbs. ensuring the ends remain parallel to each other.
11. Install the End Link onto the sway bar. End link body should install on the outside of the sway bar arm and axle mount. The nuts should be on the outside of both connections, Bolt heads on the inside.  
**Note:** The axle connection may require the truck to be on the ground to assemble.
12. Once on the ground, install axle side with the reducer sleeve in the factory mount and torque end-link hardware to: 40ft.lbs.

